

Bond | Protect | Beautify

www.sames-kremlin.com



04C240 Airspray Paint Pump

Airspray / Pumps



- Stainless steel construction
- Designed for medium viscosity materials
- Extended lifetime



Apply your Skills

www.sames-kremlin.com

Markets



13 chemin de Malacher - CS 70086
38243 MEYLAN Cedex - FRANCE
Phone: +33 (0)4 76 41 60 60 - Fax: +33 (0)4 76 41 60 90

04C240 Airspray Paint Pump

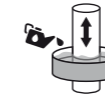
Paint circulation pump for medium or low pressure applications.



Technologies



Chevron Sealing



Cup Lub



2 Ball



Triple Chrome Layer

Designed for medium viscosity products with 1 or more guns. For circulating & automatic machines.



Technical data table

Designation	Value	Unit: metric (US)
Pressure Ratio	4 : 1	
Maximum Fluid Pressure	24 (347.8)	bar (psi)
Maximum Air Pressure	6 (87)	bar (psi)
Maximum Temperature	60 (140)	°C (°F)
Cylinder	240 (8.1)	cc (oz)
Sound Level	80	dBa
Fluid Output at 30 cycles/mn	7.2 (1.9)	l/min (gal/mn)
Free Flow Rate	14.4 (3.8)	l/mn (gal/mn)
Air Consumption at 30 cycles/mn at 4 bar (60 psi)	10.3 (6.1)	m ³ /h (cfm)
Air Inlet	F 3/4" BSP	
Fluid Outlet	M 1/2 JIC	
Fluid Inlet	M 26x125	
Number of Cycles per liter of products	4	
Sealing Packing Lower PEHD	♦	
Sealing Packing Upper PTFE G - Polyfluid	♦	
Height	83 (32.7)	cm (in)
Width	40 (15.7)	cm (in)
Depth	21 (8.3)	cm (in)
Wetted Shares: Stainless Steel	♦	
Weight	27 (59.5)	kg (lbs)

Performance:

- ♦ High output to feed several guns in circulation
- ♦ High suction power

Productivity:

- ♦ Ideal for most materials

Sustainability:

- ♦ Triple chrome piston & cylinder, stainless steel ball & carbide seat for long-term use
- ♦ Sleek design with few parts. The inversion system provides a fast changeover for a constant material delivery.



Description

